

Marie Curie Initial Training Network EXACT

Prepared by Bogdana Depo
EXACT Marie Curie ITN Fellow (Ukraine)
Eastern Dimension of Mobility
7 July 2011, Warsaw

Presentation structure

- 1) Presentation of the programme
- 2) Personal experience
- 3) Recommendations

What is a Marie Curie **I**nitial **T**raining **N**etwork?

EU-wide PhD and professional training programme designed for young researchers, academics and professionals (12 fellows) working in the field of EU **External Actions = EXACT Marie Curie Initial Training Network**



Partner Institutions

			University of Cologne, D Charles University Prague, CZ University of Edinburgh, UK
			Centre for European Policy Studies, B Trans European Policy Studies Association, B European Institute of Public Administration, NL
			Finnish Institute of International Affairs, FI Istituto Affari Internazionali, I Institute for World Economics, HU

Phases of the Programme

TRAINING PHASE I

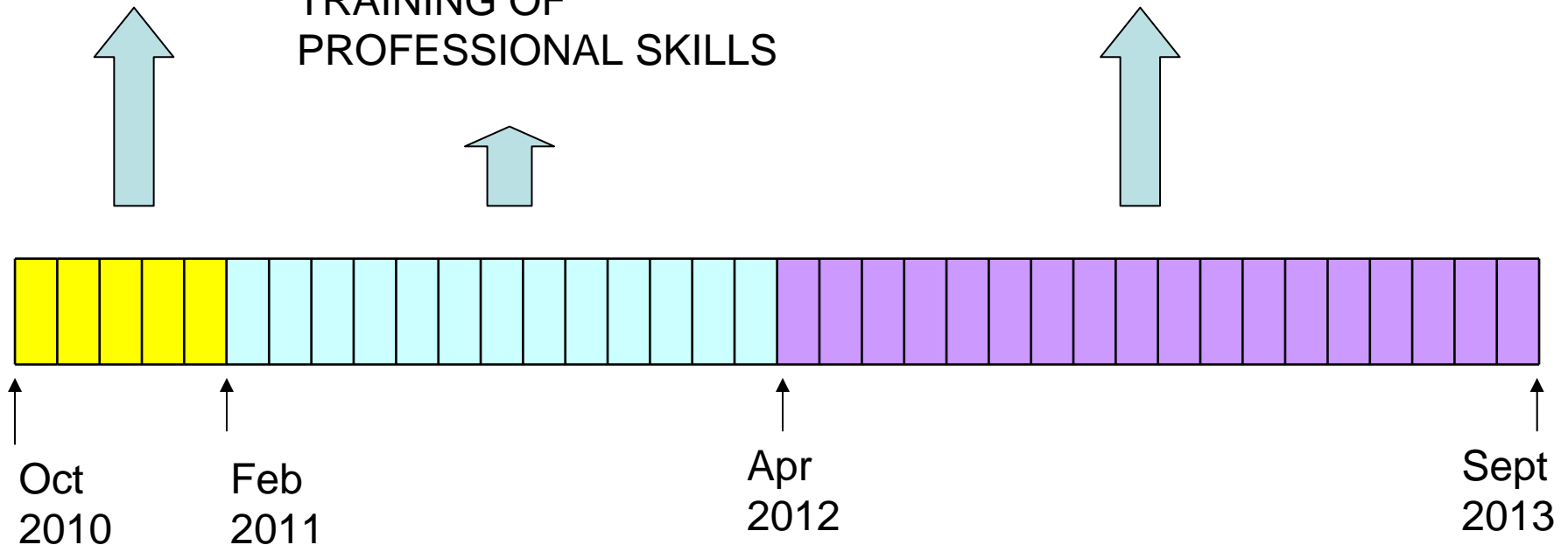
INTENSIVE ACADEMIC
TRAINING
University of Cologne

TRAINING PHASE III

FINALISING PhD **'co-tutelle'**
University of Cologne, Prague and
Edinburgh

TRAINING PHASE II

TRAINING OF
PROFESSIONAL SKILLS



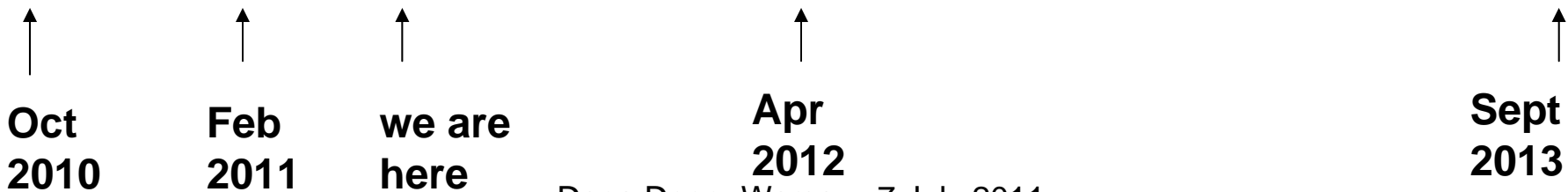
Dana Depo, Warsaw, 7 July 2011

My Programme

Phase I – Cologne University, 6 courses together with all the EXACT fellows (5 months)

Phase II – EIPA, Maastricht (8 months) and CEPS, Brussels (5 months)

Phase III – Cologne and Prague University (18 m)



Dana Depo, Warsaw, 7 July 2011

Individual Research Project under Supervision

My PhD father is Prof. Wessels (Cologne University).
My PhD mother is Prof. Rovna (Prague University).



WWW.PHDCOMICS.COM

What opportunities does the programme provide for me?

- Possibility to work in an inspiring multicultural environment that constantly enriches me
- Access to prominent professors and decision-makers
- Participation in interesting conferences and events
- Travel around the EU and experience how the same type of institutions function
- Possibility to promote Ukraine abroad 😊

My Motivation

Motivation and Stimulus OR



STICKS and CARROTS

Recommendations

- This type of programme should be accessible to a wider group of participants from the EaP countries (Europeanisation is not possible without socialisation and cooperation).
- Eliminate visa barriers
(A) we have had a number of problems with obtaining visas and we face many difficulties with obtaining residence permits since we are constantly moving
(B) due to the burdening procedure of bringing the scholar from non-EU country, the EU hosting institution prefers to take the EU scholars instead.
- Establish 'follow-up' with the Marie Curie fellows, especially on the EU External Actions research.

Bogdana Depo

EXACT Marie Curie Fellow

bogdana.depo@coleurope.eu

www.exact.uni-koeln.de/

