

WELCOME TO
THE
EXACT INITIAL CONFERENCE

21 October 2010

eXact

INITIAL CONFERENCE
COLOGNE, 21 OCTOBER 2010
MARIE CURIE ITN ON
EU EXTERNAL ACTION

WULF REINERS
UNIVERSITY OF COLOGNE



Initial Conference

Thursday 21 October 2010, 14h - 19h

Neuer Senatssaal, University of Cologne,
Hauptgebäude, Albertus-Magnus-Platz

14:00 -
16:30

Panel discussion

„New challenges for academic research in the area of
EU external action“

E. Best	(EIPA, Brussels)	P. Kaczyński	(CEPS, Brussels)
G. Bonvicini	(Istituto Affari Internazionali, Rome)	H. Marhold	(CIFE, Nice)
E. Bomberg	(University of Edinburgh)	J. Peterson	(University of Edinburgh)
P. de Schoutheete	(EGMONT Institute, Brussels)	E. Regelsberger	(Institut für Europäische Politik, Berlin)
A. Inotai	(Institute for World Economics, Budapest)	L. Rovna	(Charles University Prague)
J.P. Jacqué	(TEPSA Institute, Brussels)	A. Tovias	(Hebrew University of Jerusalem)
C. Jeffery	(University of Edinburgh)	R. Wessel	(Twente University Enschede)
J. Jokela	(FIIA, Helsinki)	W. Wessels	(University of Cologne)

17:00 -
17:30

Joint PhD ceremony (co-tutelle) with representatives of the

University of Cologne (A.Nussberger, F. Schulz-Nieswandt)
University of Edinburgh (C.Jeffery)
Charles University Prague (L. Rovna)

17:30 -
19:00

Public EXACT Lecture by Mikolaj Dowgielewicz

Secretary of State for European Affairs at the Polish Ministry of Foreign Affairs

„The European Union after the Lisbon Treaty“

With an Introduction by Dr. Werner Hoyer MdB - Minister of State
at the German Federal Foreign Office

What is a **Marie Curie** ITN?



07.11.1867 – 03.07.1934



eXact

INITIAL CONFERENCE
COLOGNE, 21 OCTOBER 2010
MARIE CURIE ITN ON
EU EXTERNAL ACTION

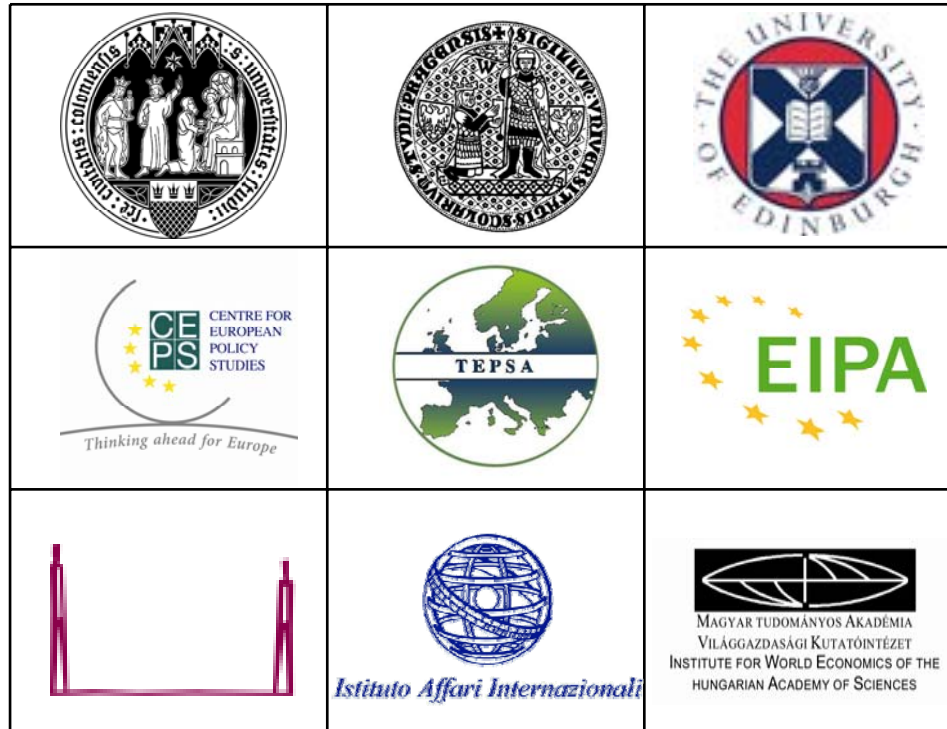
WULF REINERS
UNIVERSITY OF COLOGNE



What is a Marie Curie **I-T-N** ?

Initial **T** Training **N**etwork

			University of Cologne, D Charles University Prague, CZ University of Edinburgh, UK
			Centre for European Policy Studies, B Trans European Policy Studies Association, B European Institute of Public Administration, NL
			Finnish Institute of International Affairs, FI Istituto Affari Internazionali, I Institute for World Economics, HU




A Marie Curie ITN aims to improve early-stage researchers' career prospects in both the public and private sectors, thereby making research careers more attractive to young people.

Source: http://cordis.europa.eu/fp7/people/initial-training_en.html

What is the Marie Curie ITN EXACT?

EXACT is an EU wide Ph.D. and professional training programme for researchers in an early stage of their professional and academic careers.

in the field of EU External Action

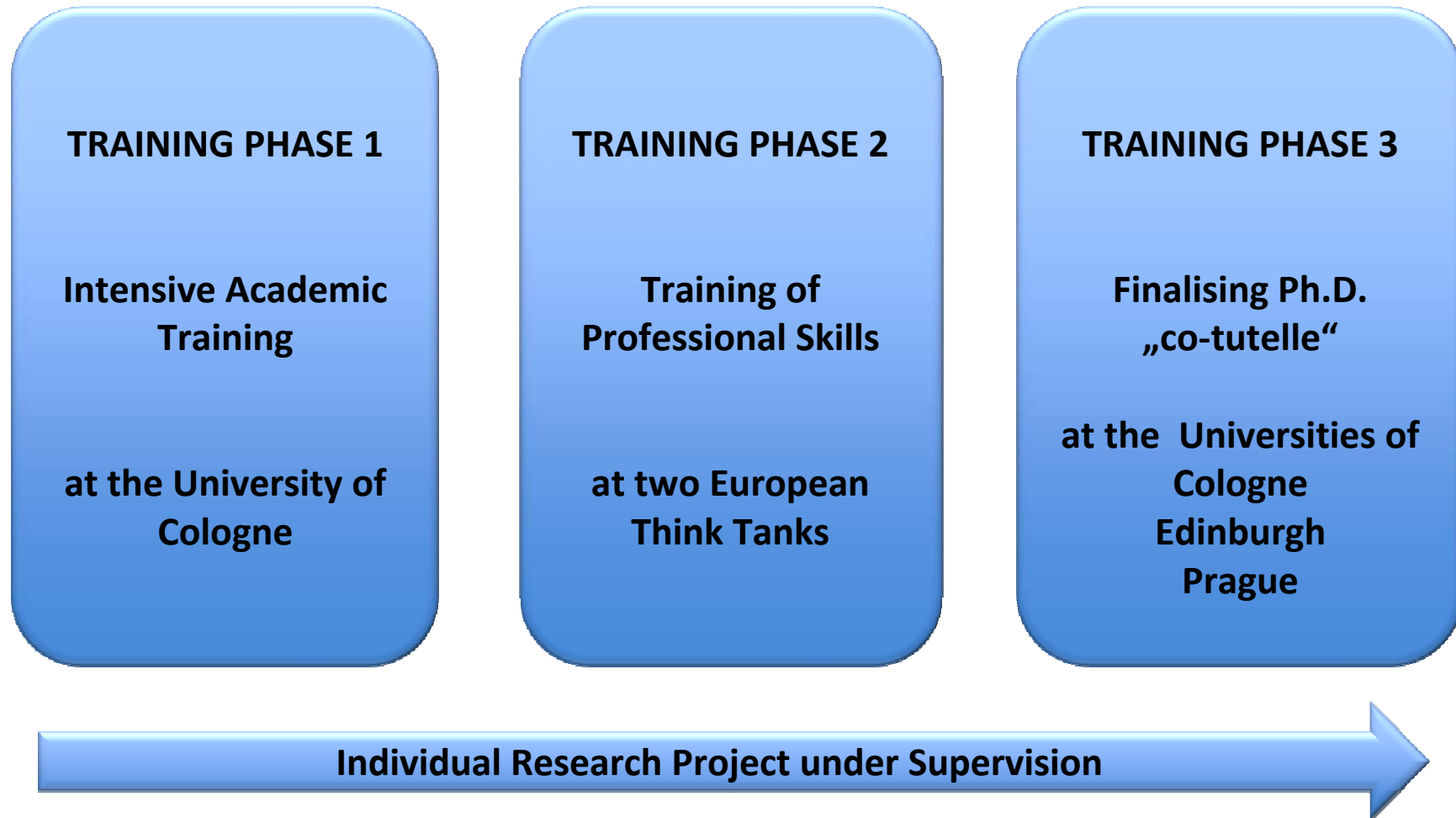

EX ACT

EXACT offers...

... a unique synergy between

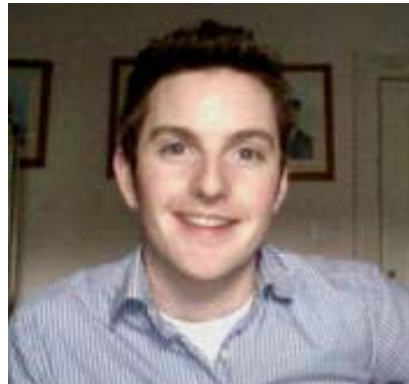
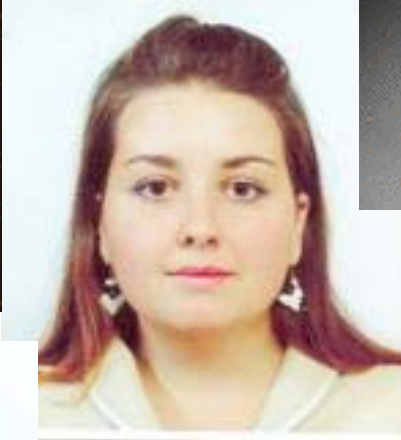
- intensive academic training in the field of EU External Action, leading to a 'bi-national' double Ph.D. ("co-tutelle") issued by two universities;
- the opportunity to gain professional experience in two European Think Tanks;

3 Phases of Training



The EXACT Fellows

- 12 participants from all over the world
- From different disciplines dealing with EU foreign policy such as political science, law, and economics
- Trained from October 2010 onwards
- For a period of 3 years



www.exact-training.net